

## Hydraulic Tube Expansion Systems (Hydex)

We are offering **Hydraulic Tube Expansion Systems (Hydex)**

### Features :

- Drive communicates with the pump via 9v DC remote control. This ensures safety & eliminates the need of electrical cord between pump and drive that other manufacturers provide.
- Silent during use. In comparison electric and pneumatic tube expansion systems are noisy.
- Compact, therefore easy to use inside boiler drums.
- Compatibility - Same powerpack for all the 4 drives to expand 5/8" o.d. to 4" o.d. tube.
- Very High Torque Developed - can expand large diameter, thick wall tubes in thick tube sheets easily.
- Long life + low maintenance.
- Boiler erections get completed in record time.
- Can be use for long working hours because drive is unaffected by heat.
- Dual drive powerpack is available to connect 2 drives to a single powerpack to cut down tube expansion time cycle by a further 50%.
- Microprocessor controls on the pump automate the expansion cycle. Trip, pause & reverse times for the drive are adjustable. No need for repeated manual STOP / START of the drive during the expansion cycle - completely automatic. The Hydraulic pump supplied with hydraulic drive incorporates the latest state of the art trechnology resulting in a subcompact pump developing 100 bar pressure. The system is mounted on four wheels for on site manevourability. Expansion of tubes is regulated by adjusting pressure setting on pump. Once required amount of wall thinning is achieved the drive trips automatically.

### Hydraulic Pump HEP - 500



	Hydraulic Pump Models		
	HEP-300	HEP-500	HEP-1000 TWIN HEAD
Oil Tank Capacity (litres)	30	45	138
Hydraulic oil	SAE VG 68	SAE VG 68	SAE VG 68
Maximum Working Pressure (bar)	100	100	100
Net weight (kgs)	80	100	220
Overall Dimensions (mm)	610 x 270 x 985	820 x 320 x 985	1775 x 550 x 1200
Electric Motor	3 hp. Single phase	5 hp. 3 phase	10 hp. 3 phase
Voltage	230 v / 110 v	415 v	415 v
Standard Hose Size (Length)	1/2" (10 mtrs.)	1/2" (10 mtrs.)	1/2" (10 mtrs.)

### Hydraulic Drives

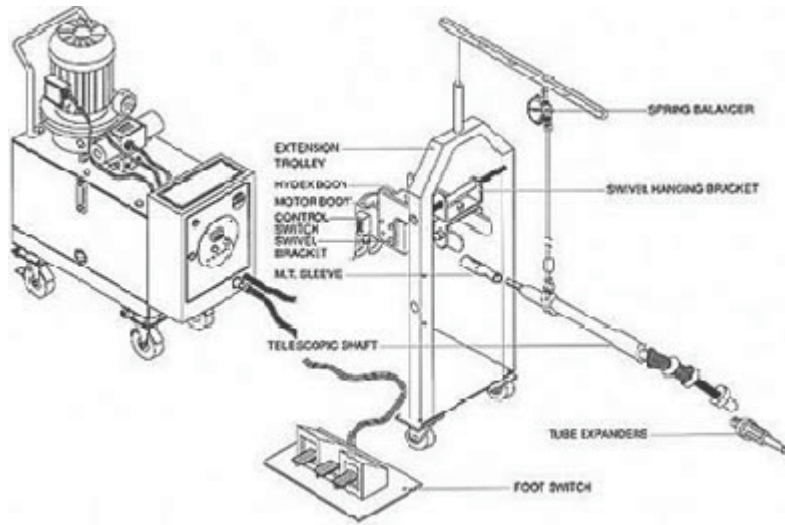


Tube Expansion Range				Model No.	Drive Square Socket inch	Drive No Load Speed (RPM) With HEP-300/500/1000	Drive Weight kgs.
Steel Tube O.D. mm	Copper Tube O.D. inch	mm	inch				
15 - 25	5/8 - 1	25 - 38	1 - 1.1/2	HED-3	3/8	620/954/800	9.6
19 - 38	3/4 - 1.1/2	32 - 64	1.1/4 - 2.1/2	HED-4	3/8 & 1/2	350/480/400	9.7
38 - 76	1.1/2 - 3	50 - 102	2 - 4	HED-5	1/2 & 3/4	62/84/70	11.0
50 - 102	2 - 4	-	-	HED-6	3/4 & 1	40/62/54	11.5

### Note :

Drive supplied with START, STOP, REVEERSE BUTTONS, QUICK RELEASE COUPLINGS, SOCKETS & REACTION BAR. Powerpack includes 2 hoses each of length 10 meters. if required longer hoses can be supplied.

### Accessories for Hydraulic Expansion Systems



Model No.	Description
TS-1	Telescopic Shaft for HED-3
TS-2	Telescopic Shaft for HED-4
TS-3	Telescopic Shaft for HED-5
TS-4	Telescopic Shaft for HED-6
SEW-5	Spring Balancer
HE/FS/24	Foot Switch
HE/EXTR/3456	Extension Trolley
HE/HB/3456	Swivel Hanging Bracket

### Hydraulic Hose :

Model No.	Hydraulic Hose (Qty. x Size x Length) (Mtrs.)
HE/HS/1210/2	2 x 1/2" x 10
HE/HS/5815/2	2 x 5/8" x 15
HE/HS/5820/2	2 x 5/8" x 20
HE/HS/1210/4	4 x 1/2" x 10
HE/HS/5815/4	4 x 5/8" x 15
HE/HS/5820/4	4 x 5/8" x 20



### Supply Cable :

Model No.	Supply Cable Length (Mtrs.)
HE/SC/15	15
HE/SC/20	20
HE/SC/25	25



### Hydraulic Drive Socket :

Model No.	Square Size
HE/DS/38	3/8"
HE/DS/12	1/2"
HE/DS/34	3/4"
HE/DS/1	1"

